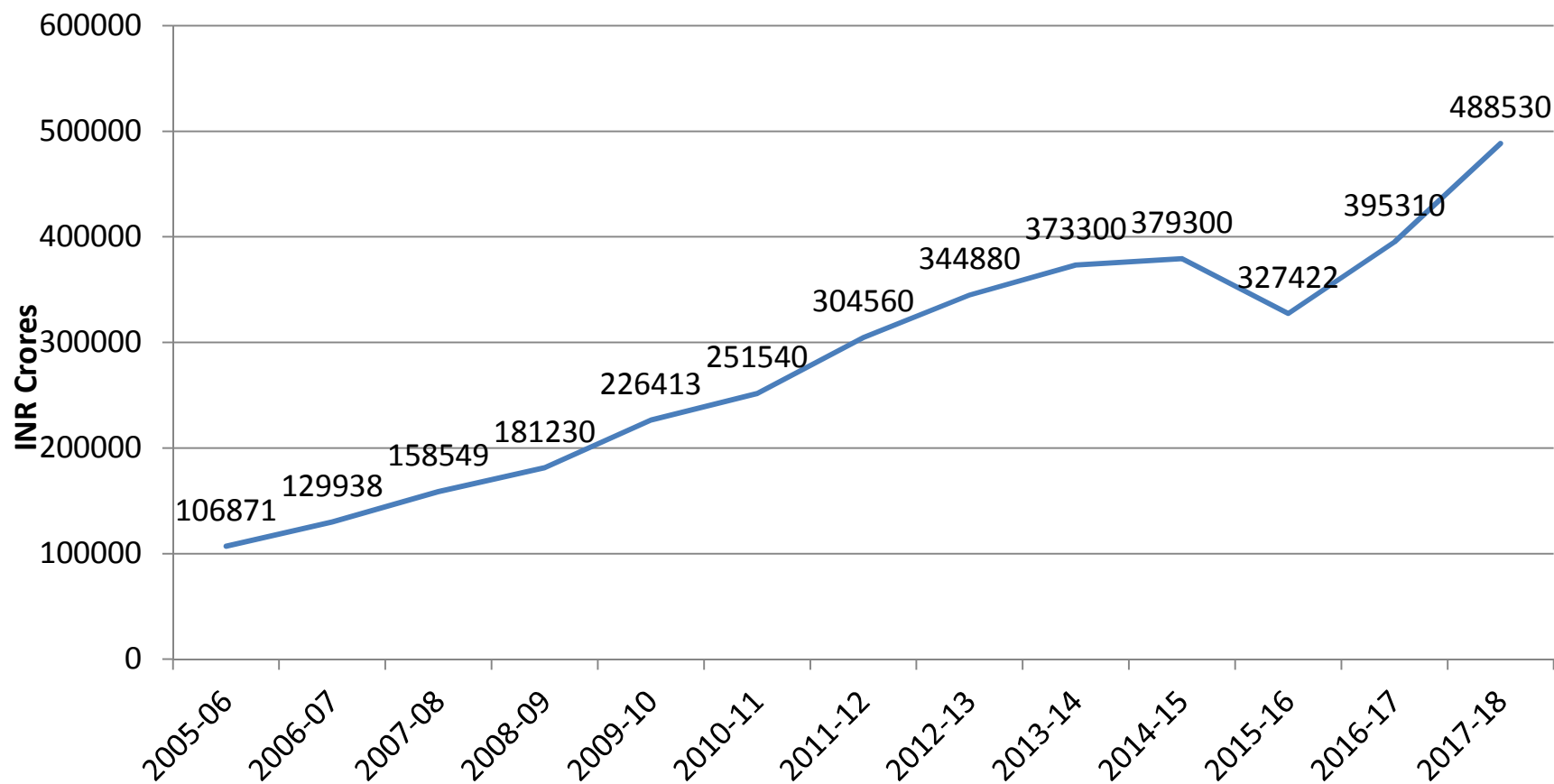


Union Budget 2017-18:  
*Haanikarak Swasthyabandi*

Indranil, JSA

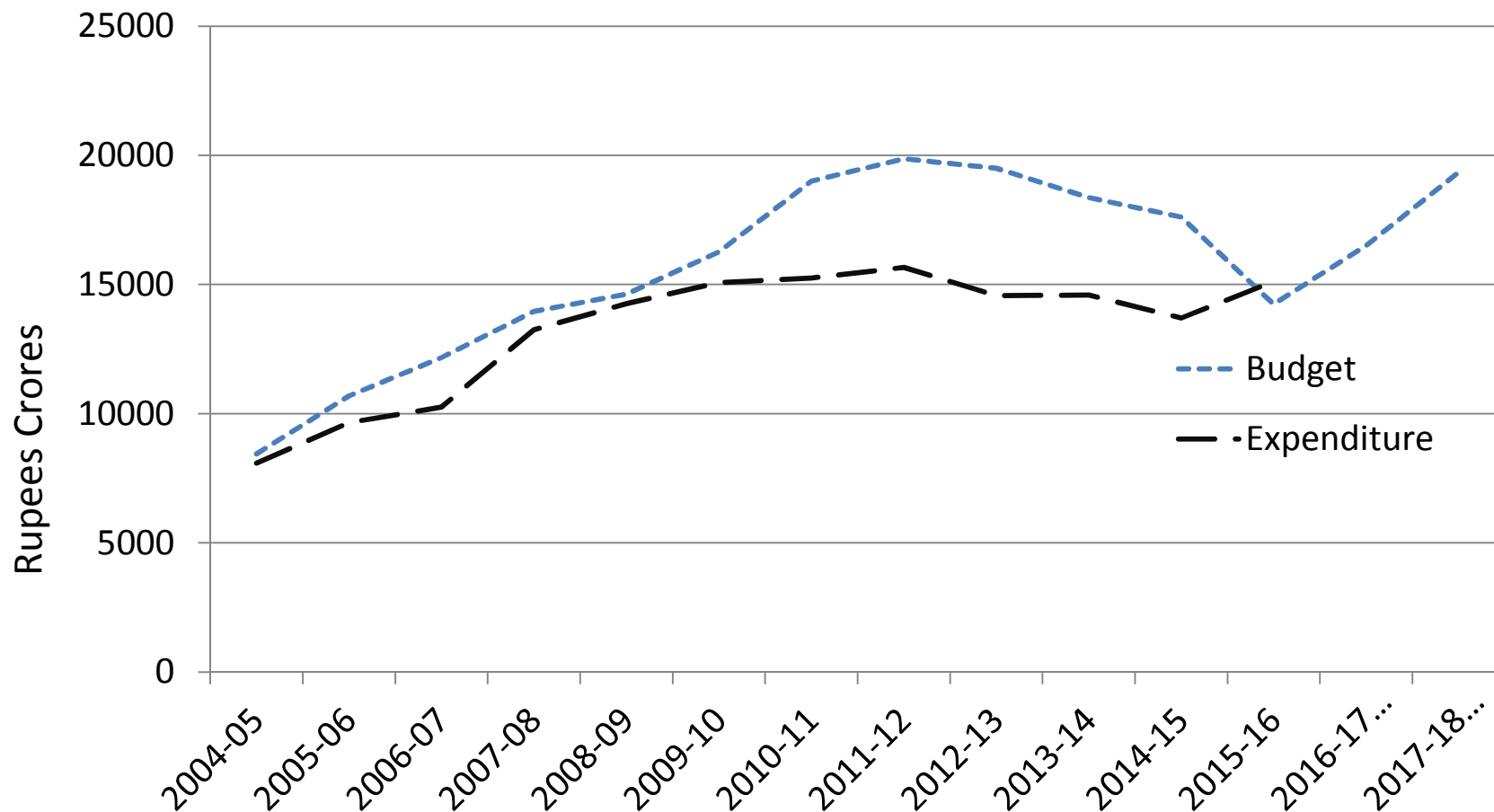
25/02/2017

# Ministry of health and family welfare allocations (INR Crores)



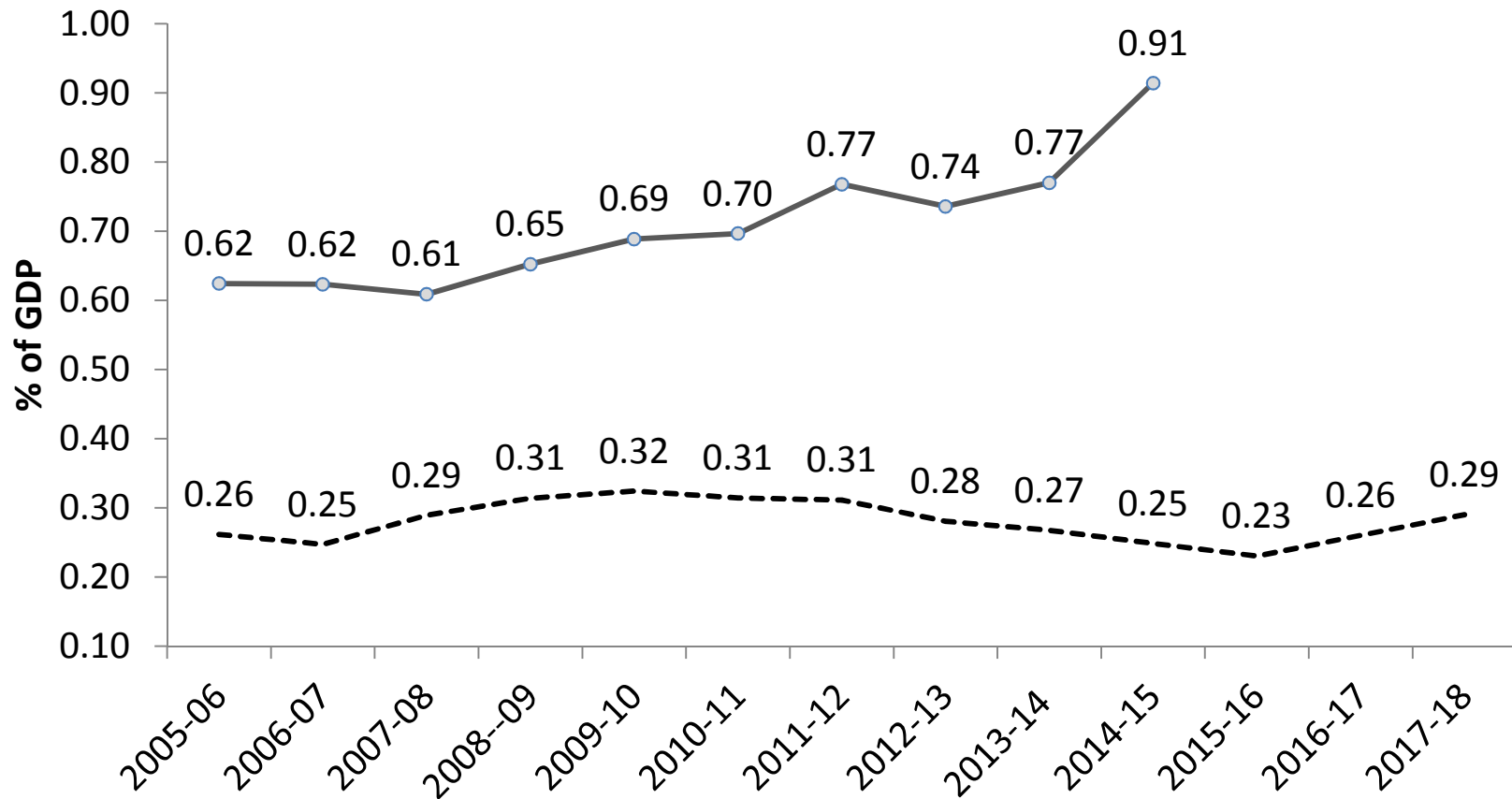
Source: Union Budget, Expenditure Budget Vol 1, various years;  
[www.indiabudget.nic.in](http://www.indiabudget.nic.in)

Figure : Union Government allocations and expenditure on Health (at constant 2004-05 prices)



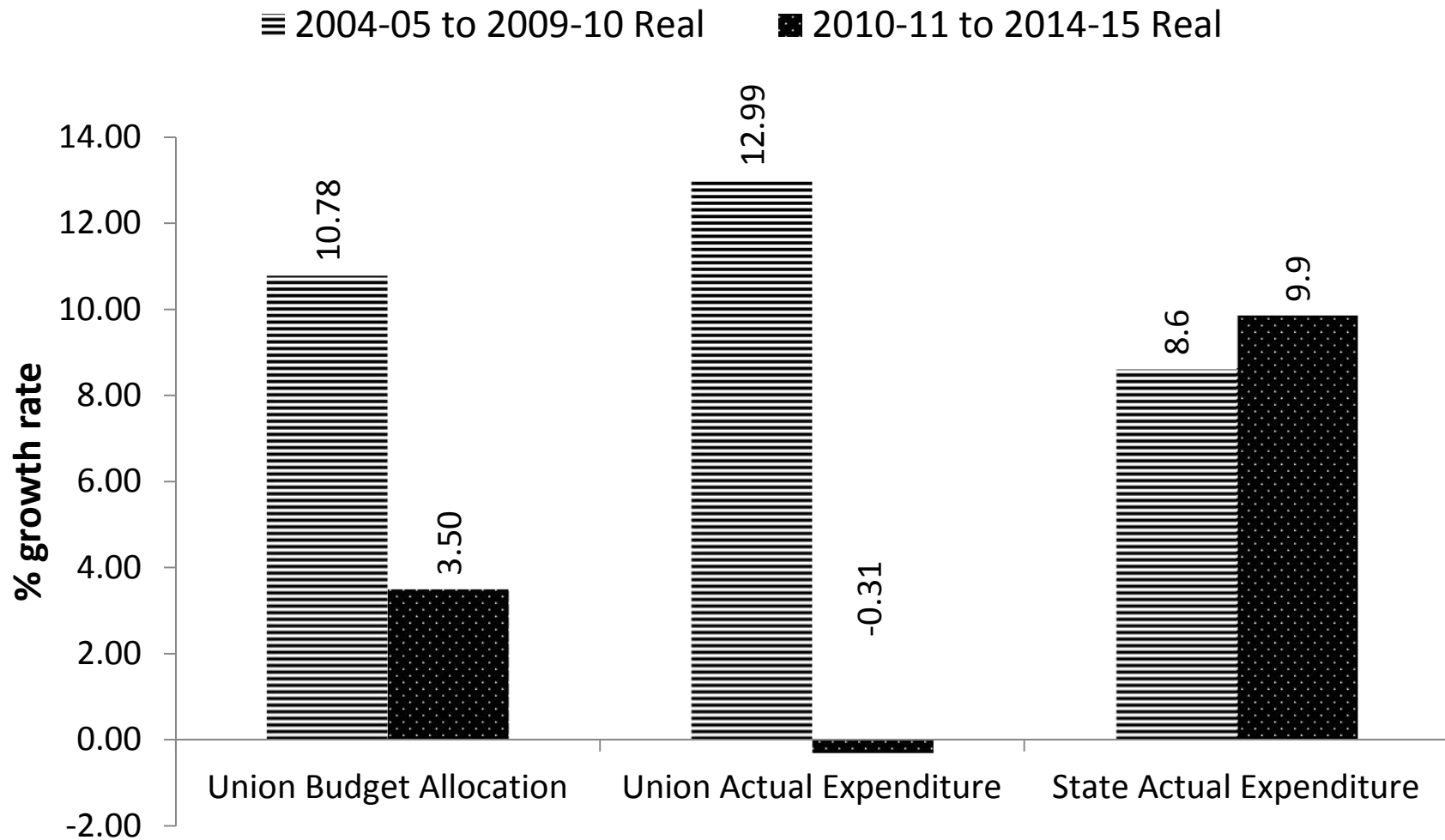
Source: Union Budget, Expenditure Budget Vol 1, various years; prices: Labour Bureau

# Union and State Government expenditure on health as % of GDP



Source: State Government exp: RBI, State Finances, A study of budgets; Union government: EB Vol 1; GDP: CSO

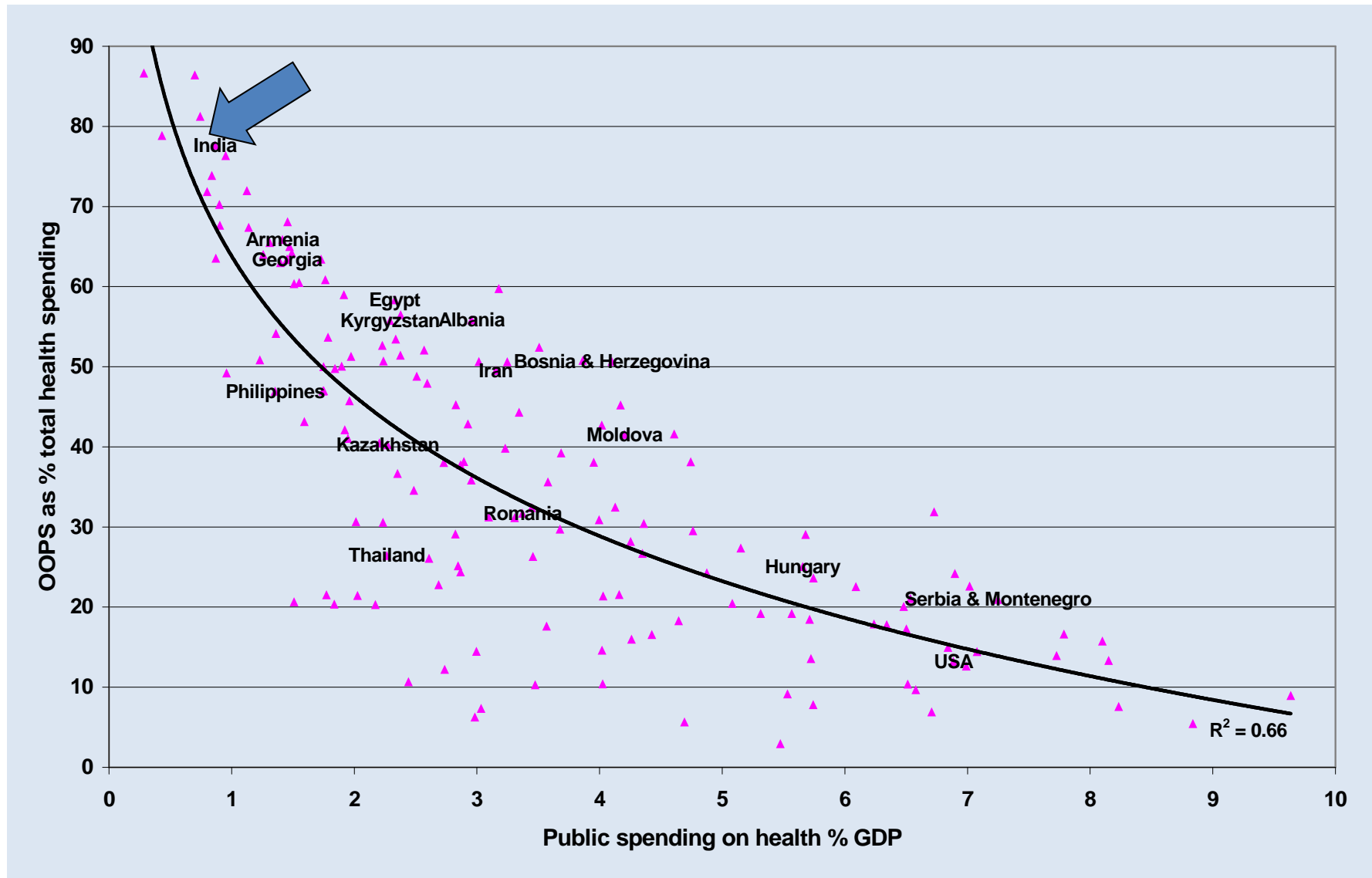
# Annual growth rate for Union and State government expenditure on health



# Health care expenditure: India in comparison with BRICS and Asian neighbours

Regions	Countries	Out of Pocket Expenditure (OOPS) as % of Total Health Expenditure (THE)		General Government Health Expenditure per Capita in Int\$ (Purchasing Power Parity)		General Government Health Expenditure (GGHE) as % of Gross Domestic Product (GDP)	
		2004	2014	2004	2014	2004	2014
BRICS	South Africa	11	6	292	554	3.2	4.2
	Brazil	33	25	344	607	3.3	3.8
	Russia	33	46	316	958	3.1	3.7
	China	54	32	79	408	1.8	3.1
	India	68	62	26	80	1.0	1.2
Asian Neighbours	Bangladesh	58	67	17	25	1.0	0.8
	Bhutan	28	25	120	206	3.2	2.6
	Pakistan	61	56	24	45	0.7	0.9
	Myanmar	85	51	5	48	<	1.0
	Nepal	55	48	23	55	1.6	2.3
	Sri Lanka	44	42	96	207	2.0	2.0
	Thailand	20	8	300	817	3.3	5.6
	Malaysia	34	35	317	574	2.1	2.3

# Government spending vis-à-vis OOP expenditure



Source: WHO estimates for 2004, excluding countries with population < 600,000

**DEMYSTIFYING BUDGETS: MAKING  
SENSE OF THE NUMBERS**



# Which questions budget can answer?

How much money is spent on health?

How important is health in the budget?

Where does the money come from?: Resource Mobilisation

Where does the money go?: Resource allocation

How is the money spent?: Resource Utilization

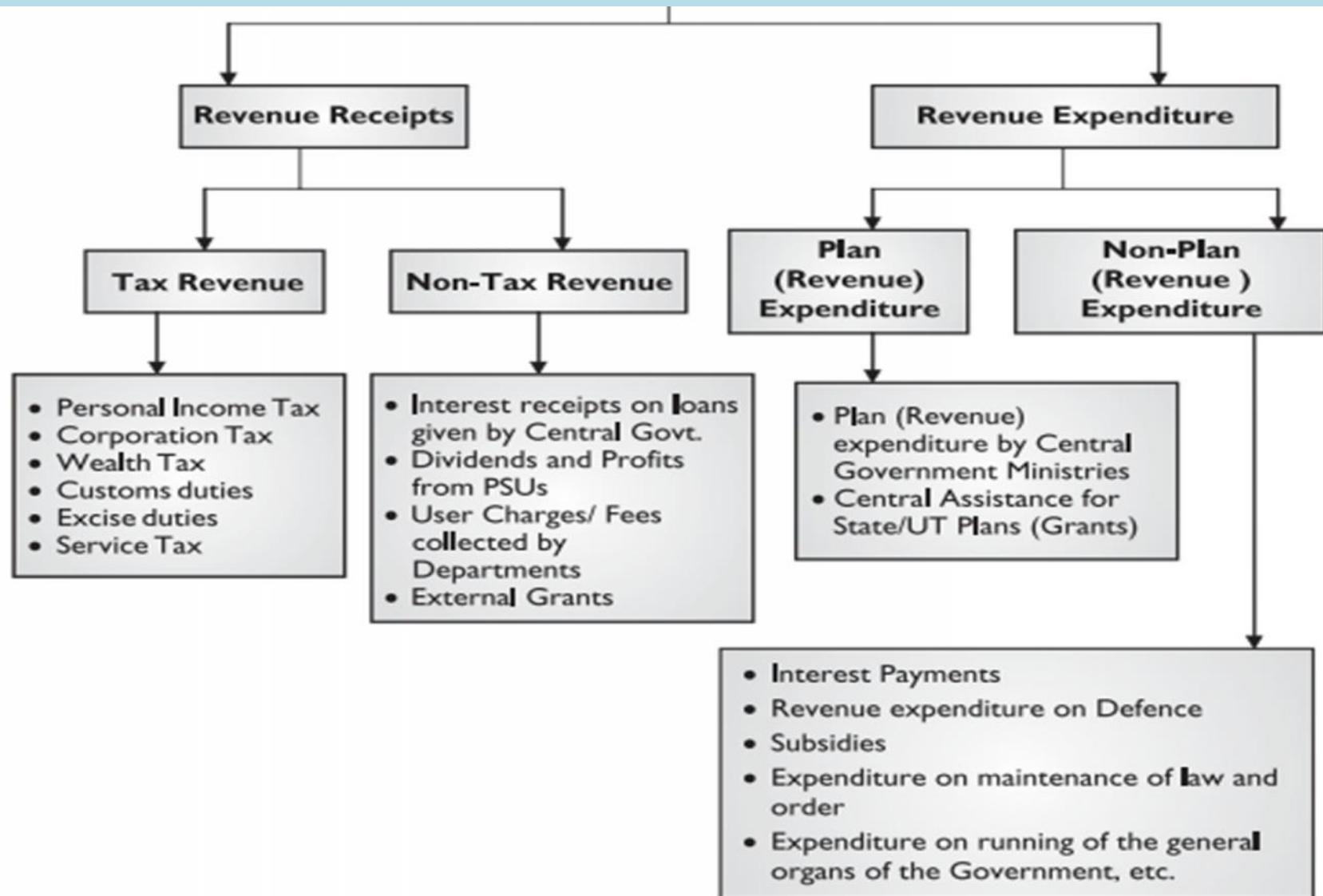
What does money buy? Resource Productivity

How much more money is required? Resource Gap

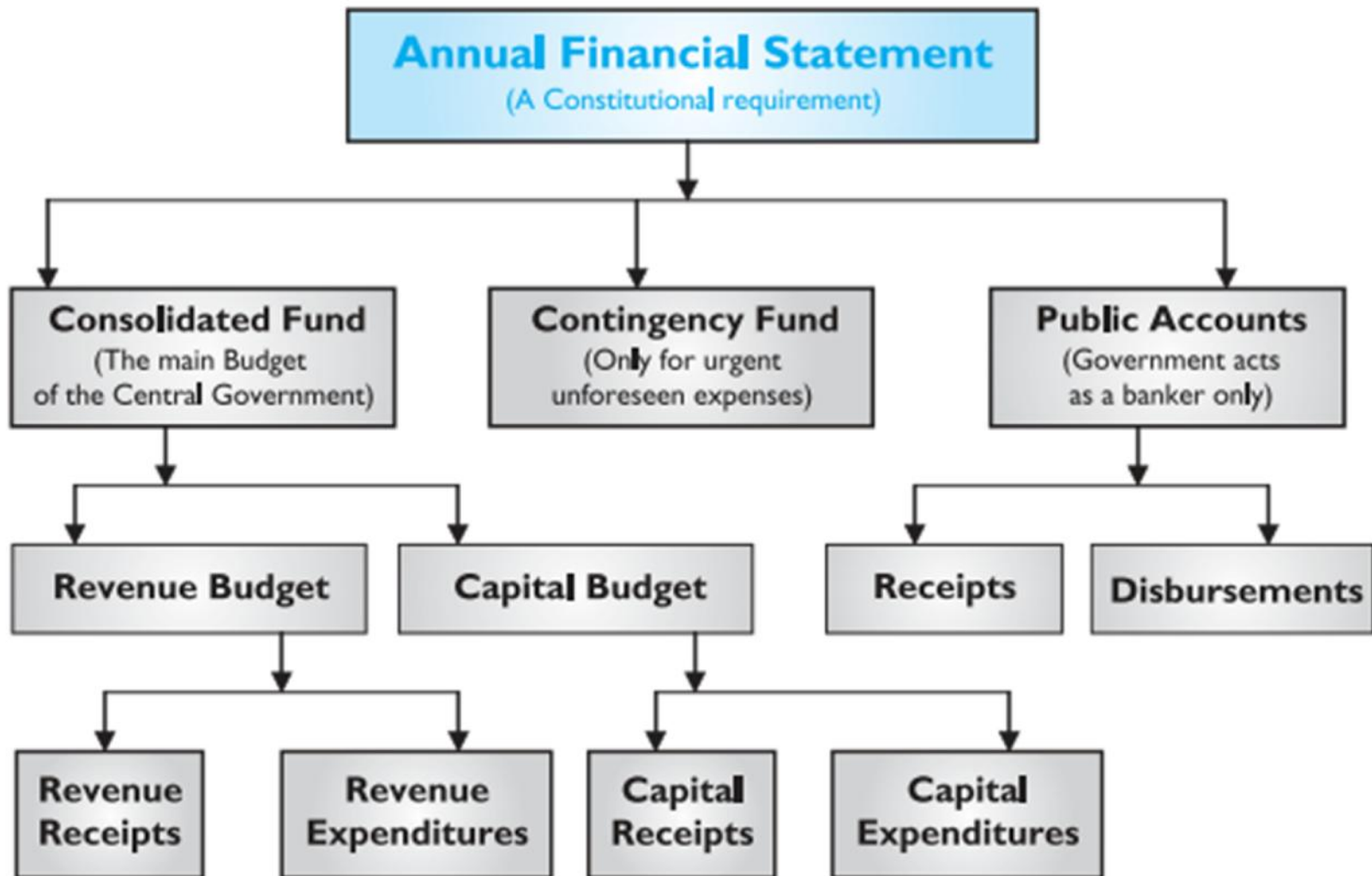
# Structure of budget (Key terms)

- Tax- non-tax Revenue
- Consolidated fund, Contingency fund and Public Accounts
- Expenditure: Developmental- Non-dev. ; Social Services- Economic services
- **Revenue, capital**
- Budget Cycle
- **Actual Expenditure, Revised Estimate, Budget Estimate**

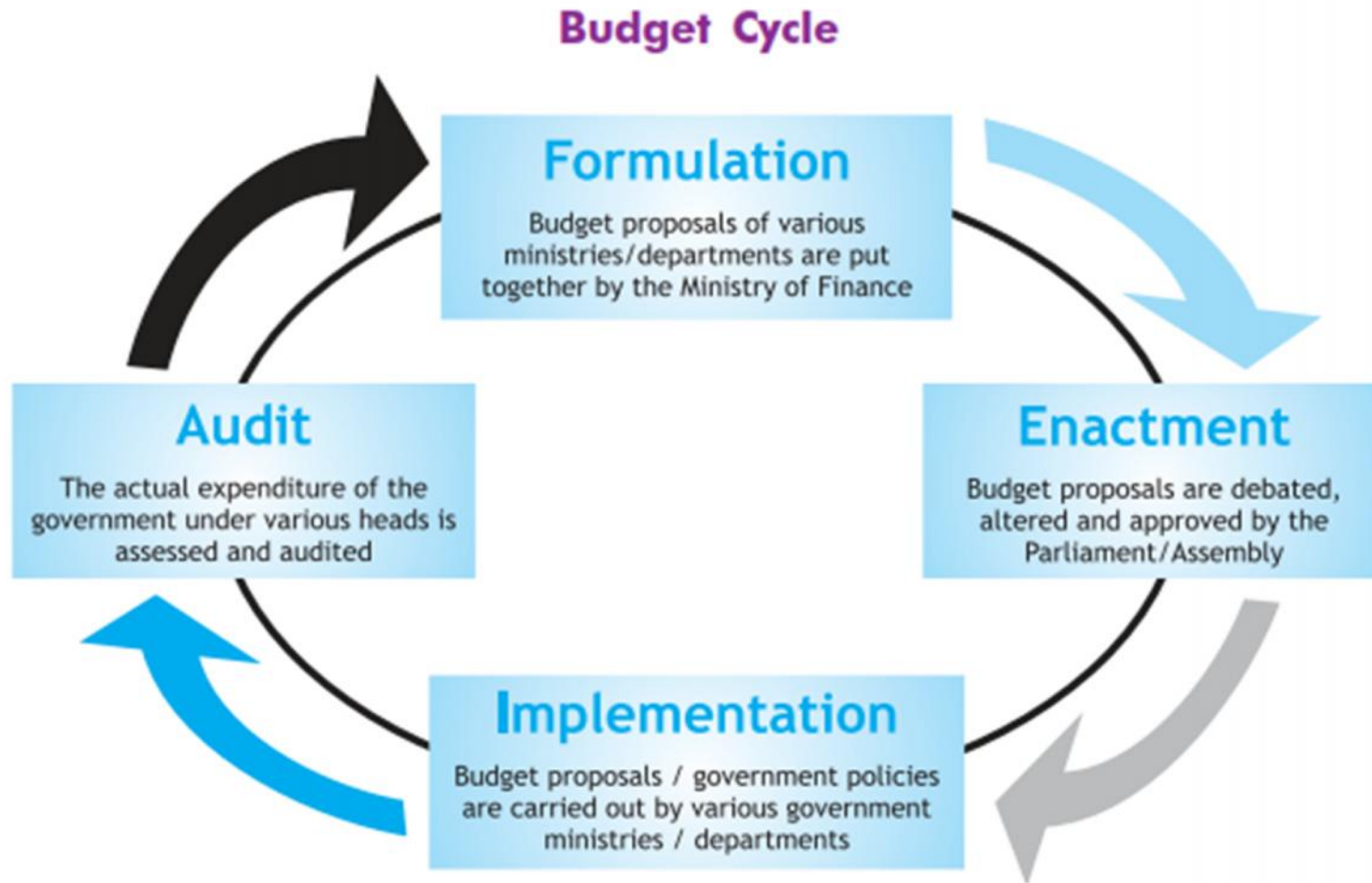
# Revenue Budget



# Components of Budget



# Budget cycle

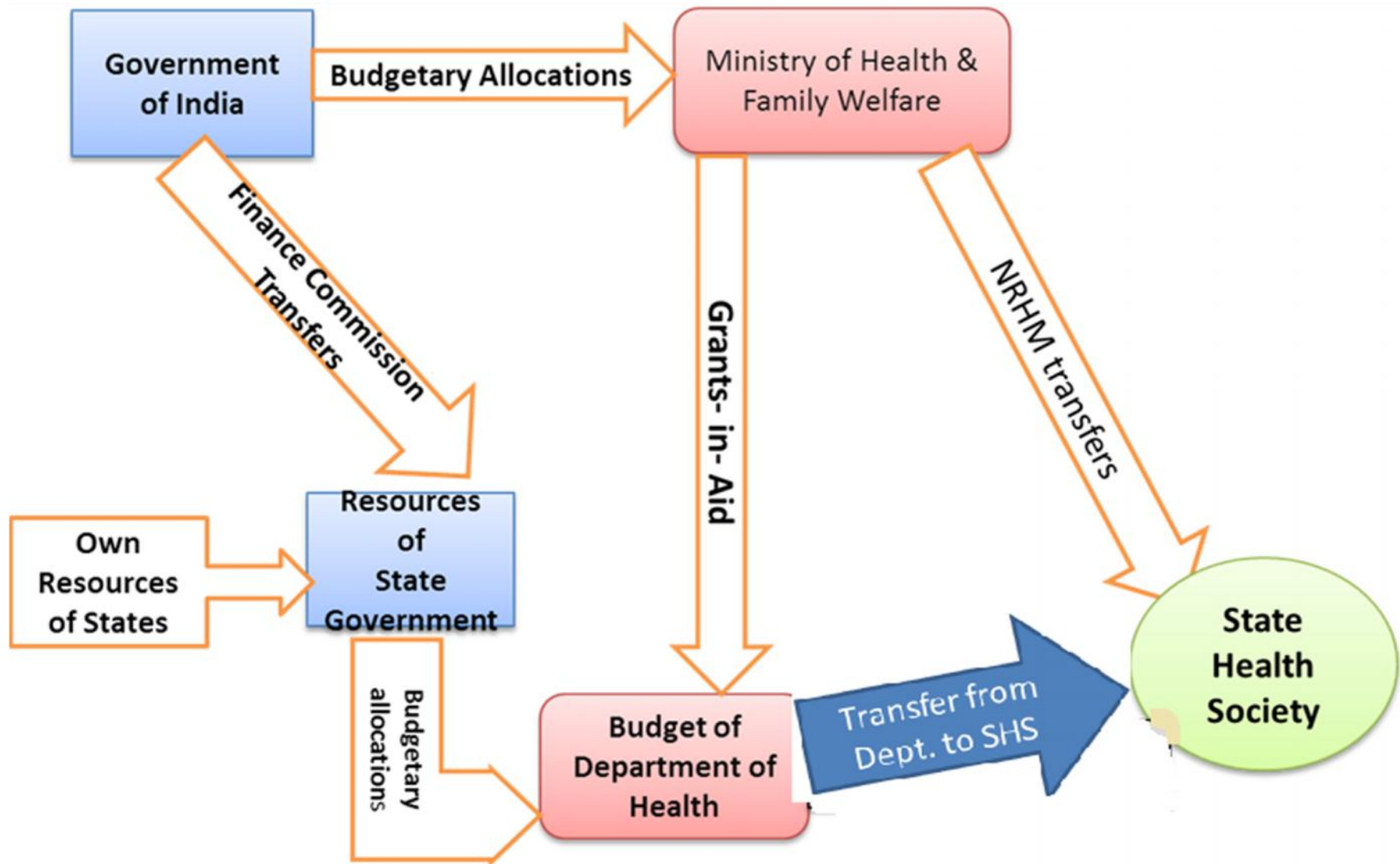


# Budget Nomenclature: Which questions?

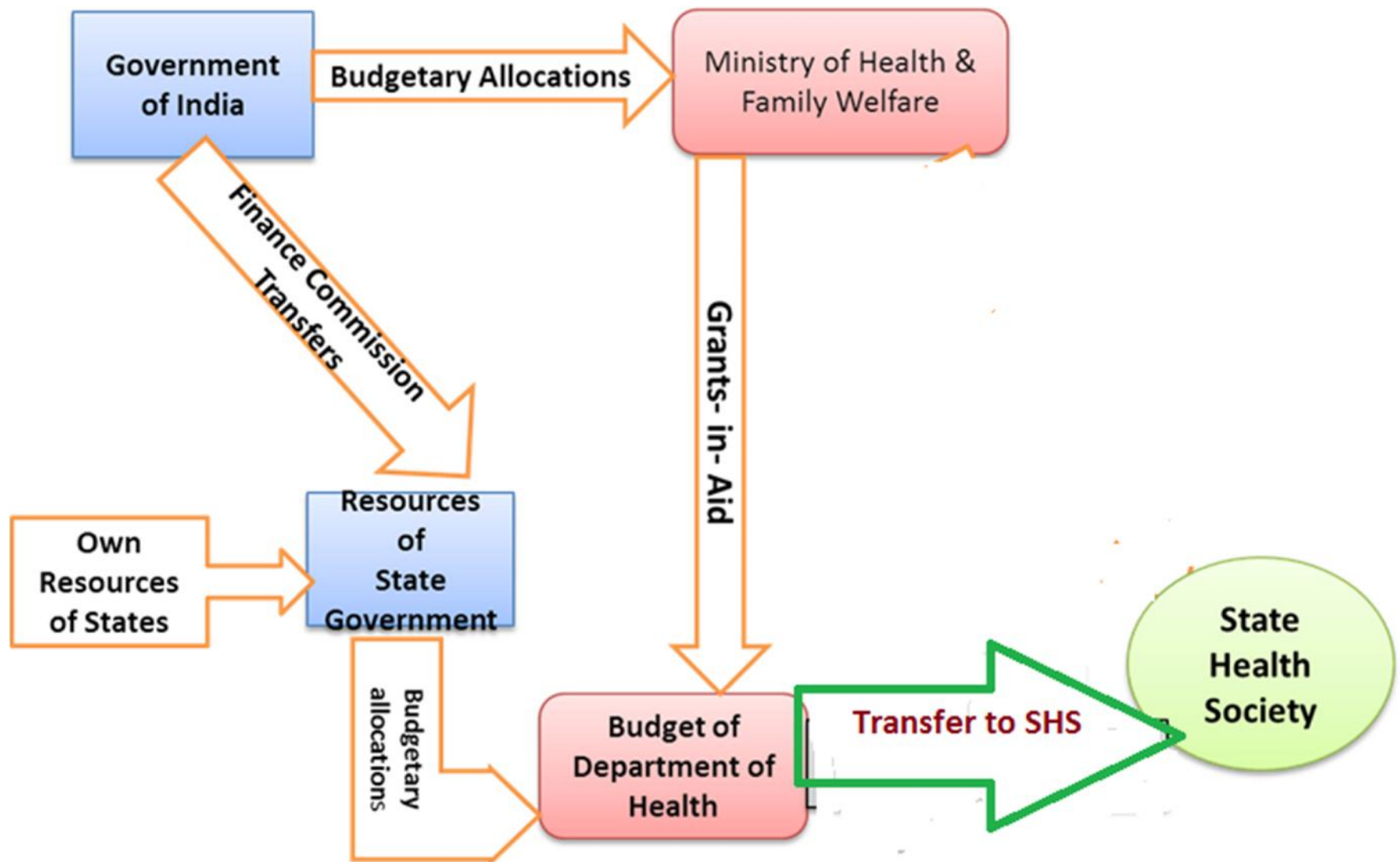
## Where?

- Major Heads (4 digits): Revenue Medical and Public Health (2210), Capital MPH (4210), Revenue Family Welfare (2211), Capital FW (4211)
- Sub-major Heads (2- digits: 2210-01, etc.): Allopathy, ISM, Medical Edu, Public Health etc..
- Minor Heads (3 digits: 2210-01-001): Primary-secondary-tertiary; Rural-Urban; curative- preventive-rehab-promotion
- Sub-minor Heads (2 digits: 2210-01-001-99) (not uniform across states); (gender, children; disease wise etc)
- Detail Heads (2 digits): (salaries, drugs, equipment etc.)

# Flow of funds for health: 2005-06 to 2013-14



# Fund flow mechanisms since 2014-15





# Magnitude of public spending on health at national level

Total Govt. Exp. on Health=

Ministry of HFW (2210+2211+4210+4211+2251)

+Other Ministries (Railways, Defence, Labour..)

+ State Dept. of Health (2210, 2211+4210+4211+2251)

+Other state depts.

- Grants from Centre to States & UTs (3601+3602)

+ Expenditure by local bodies

# Magnitude of public spending on health at the State level

Total spending on health care at the state=

Exp. by State depts. related to health (etc.)

+Exp. by other state depts .

+ Exp. through State Health Society (SHS) (GiA)  
(?)

- Transfers from State dept. to SHS

# Data Sources (Budget)

[Expenditure Budget Vol. 1](#)

[Expenditure Budget Vol. 2](#)

[RBI: State Finances: Study of Budget \(MPH, FW; Rev-Cap\)](#)

[CAG: Combine Finance Accounts](#)

[Detailed demand for grants,](#)

State budgets

Budgets of Municipal Corporations and Municipalities

# Group work

- Group 1:
  - What is the total expenditure on health Union and State government taken together in 2015-16 and 2016-17? What is the growth rate in allocations?
- Group 2:
  - How much additional resources have been allocation under National Health Mission between 2015-16, 2016-17 and 2017-18? What is the growth rate in allocations? What are your observations regarding allocation on NHM?
  - What amount of money has been invested under National Health Protection Scheme between 2016-17 and 2017-18?